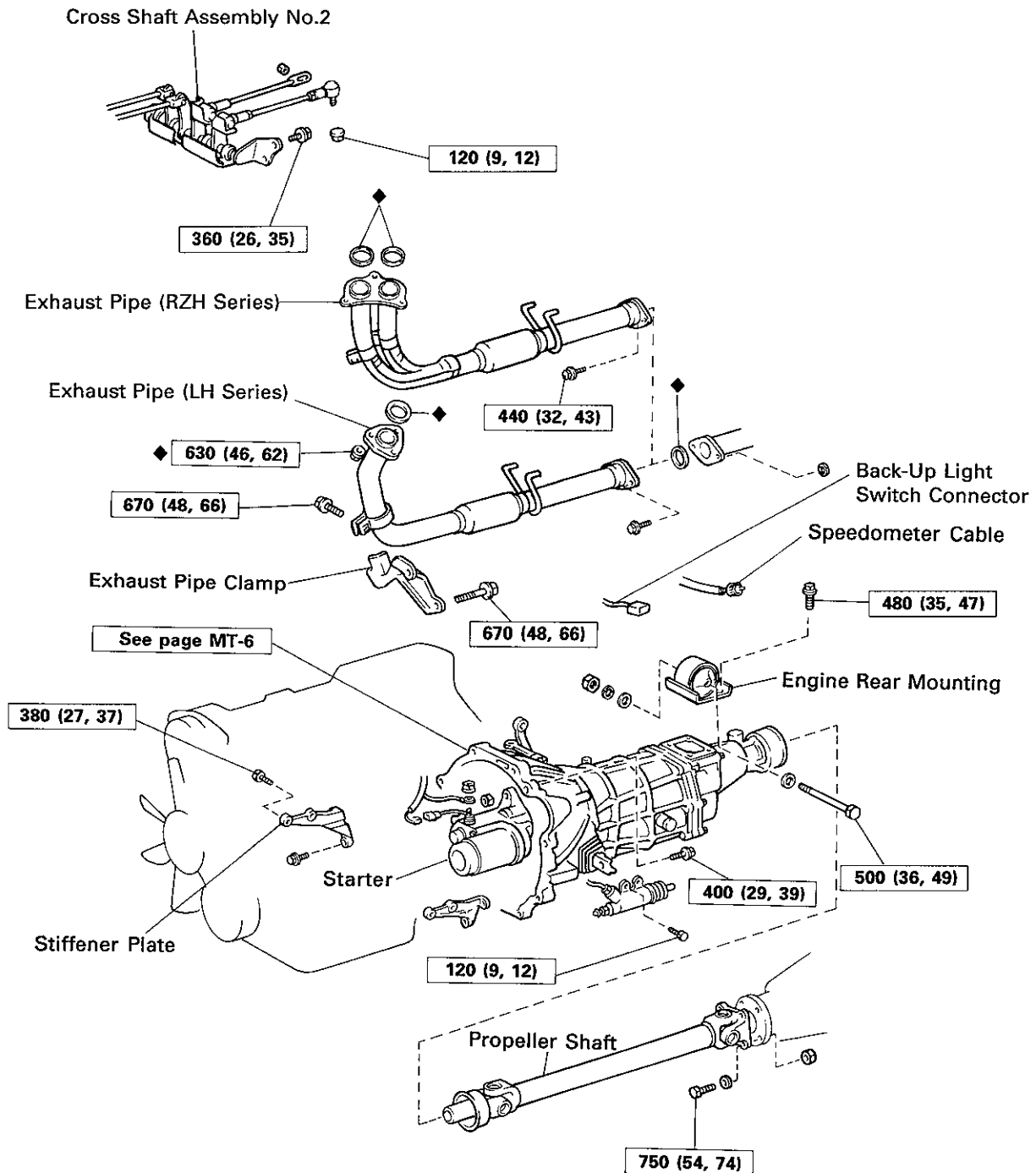


REMOVAL AND INSTALLATION OF TRANSMISSION

Remove and install the parts as shown

HINT: For the transmission with a transfer (4WD) refer to MT-5.

2WD



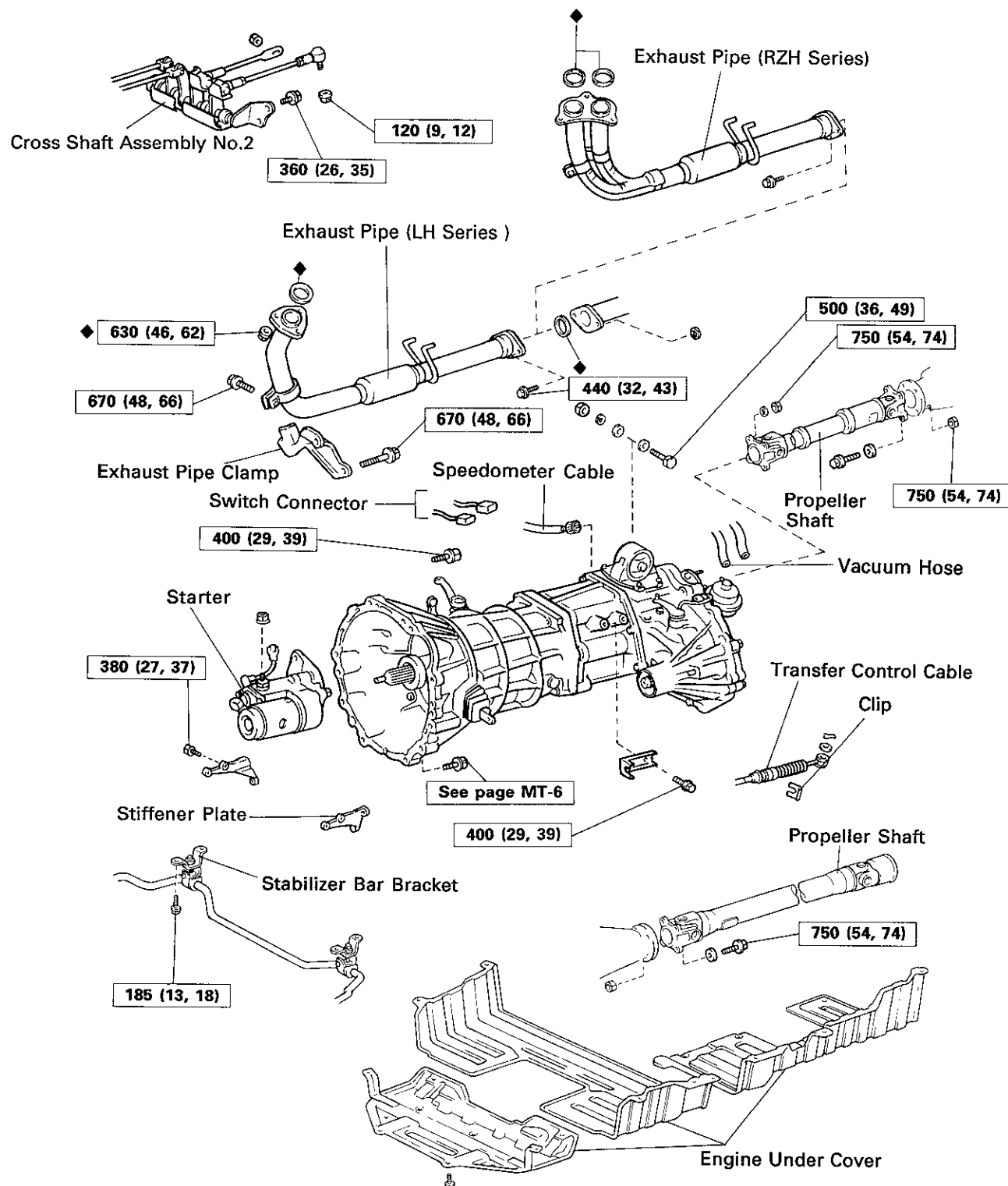
kg-cm (ft-lb, N-m) : Specified torque

◆ Non-reusable part

REMOVAL AND INSTALLATION OF TRANSMISSION (Cont'd)

Remove and install the parts as shown

4WD

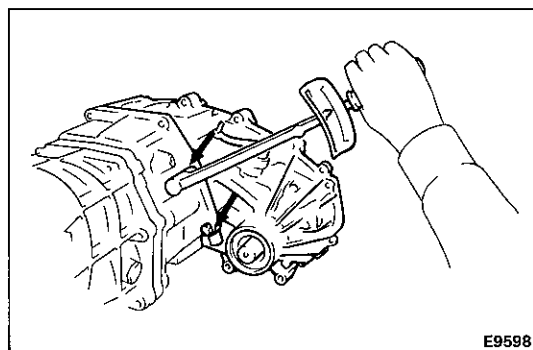
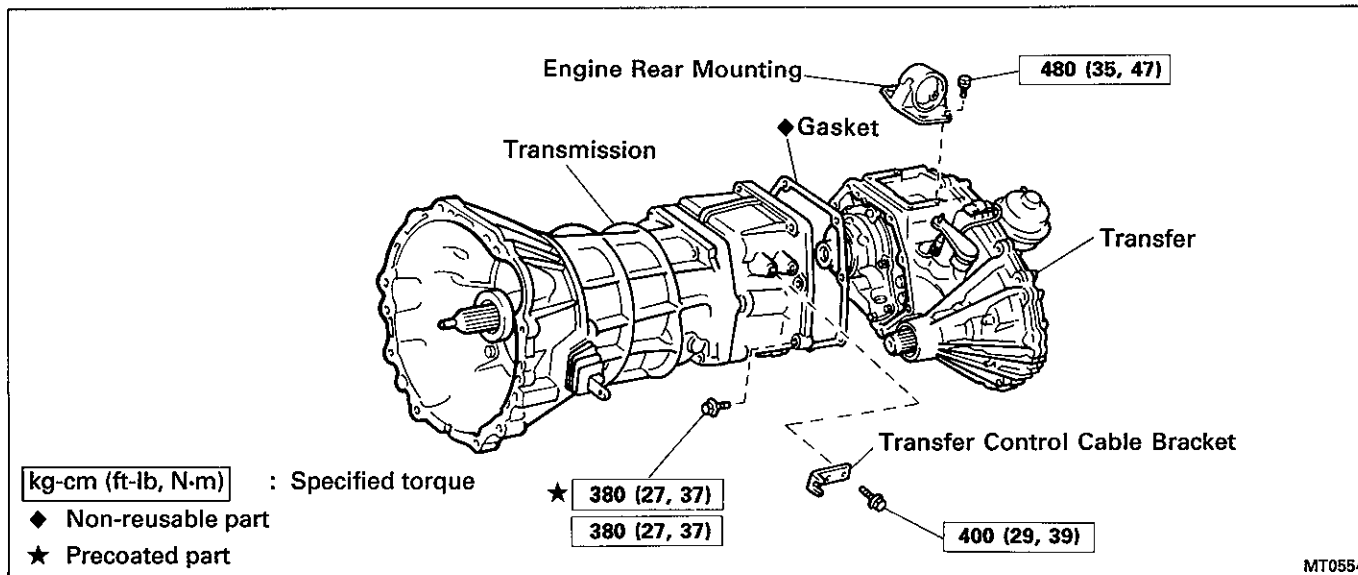


kg-cm (ft-lb, N-m) : Specified torque

◆ Non-reusable part

REMOVAL AND INSTALLATION OF TRANSMISSION (Cont'd)

Remove and install the parts as shown



(MAIN POINT OF INSTALLATION)

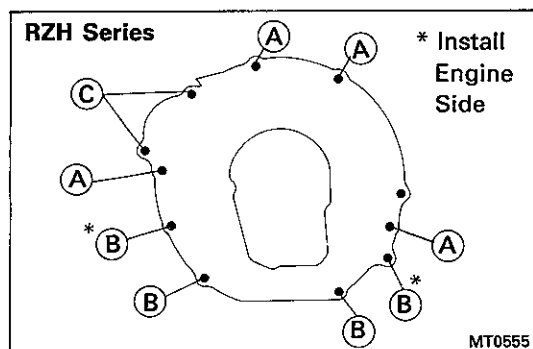
1. INSTALL TRANSFER TO TRANSMISSION WITH NEW GASKET

- (a) Place a new gasket to the transfer adaptor.
- (b) Align the input shaft spline with the transmission output shaft, and push the transfer fully into position.
- (c) Apply sealant to the two front bolt threads.

Sealant: Part No.08833-00080, THREE BOND 1344, LOCTITE 242 or equivalent

- (d) Install and torque the bolts.

Torque: 380 kg-cm (27 ft-lb, 37 N·m)

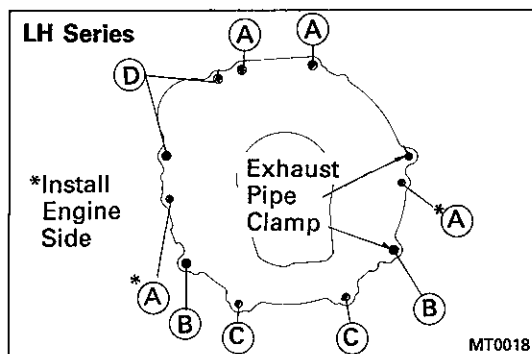


2.-1 (RZH)

INSTALL TRANSMISSION BOLTS, STIFFENER BOLTS AND STARTER

Torque:

- | | |
|------------------------------|---------------------------------|
| Ⓐ Transmission Mounting Bolt | 730 kg-cm
(53 ft-lb, 72 N·m) |
| Ⓑ Stiffener Plate Bolt | 380 kg-cm
(27 ft-lb, 37 N·m) |
| Ⓒ Starter Bolt | 400 kg-cm
(29 ft-lb, 39 N·m) |

**2.-2 (LH)****INSTALL TRANSMISSION BOLTS, STIFFENER BOLTS AND STARTER****Torque:**

(A)	Transmission Mounting Bolt	730 kg-cm (53 ft-lb, 72 N·m)
(B)	Stiffener Plate Bolt – Upper	700 kg-cm (51 ft-lb, 69 N·m)
(C)	Stiffener Plate Bolt – Lower	380 kg-cm (27 ft-lb, 37 N·m)
(D)	Starter Bolt	400 kg-cm (29 ft-lb, 39 N·m)

3. FILL TRANSMISSION AND TRANSFER WITH OIL**Transmission oil–****Oil grade:** API GL-4 or GL-5**Viscosity:** SAE 75W-90**Capacity:****2WD (5-Speed)**

2.2 liters (2.3 Us qts, 1.9 Imp. qts)

2WD (4-Speed)

2.4 liters (2.5 Us qts, 2.1 Imp. qts)

4WD

2.6 liters (2.7 US qts, 2.3 Imp. qts)

Transfer (4WD)–**Oil grade:** API GL-4 or GL-5**Viscosity:** SAE 75W-90**Capacity:** 1.2 liters (1.3 US qts, 1.1 Imp. qts)